

MIDAS Metall®

---

THE METAL SKIN



# MIDAS METALL® – THE INNOVATION IN SURFACE FINISHING

What is MIDAS Metall? .....	3
Application .....	4
Artifex Spatula Products .....	7
MIDAS Metall Art .....	8
Application Technique .....	13
Surface Design .....	14
MIDAS Services .....	18
Overview of Materials .....	20
Picture Index .....	23

FEEL THE  
INSPIRATION.

# WHAT IS MIDAS METALL?

King Midas turned everything he touched into gold. MIDAS Metall® has tapped into the legend allowing you to cover almost any object with a real metal skin, giving it the appearance

and natural properties of metal itself. Depending on the quality, the new surface comprises up to 95 % of bronze, copper, brass, stainless steel or other metal. Both even and com-

plex surfaces can be coated without jointing by applying it in a liquid consistency. Simple and light base materials obtain a completely new appearance.



# APPLICATION

The biggest and best-established area of application is the high-end completion of interior. Therefore many elegant MIDAS Metall surfaces can be seen worldwide in hotels, restaurants, retail stores as well as in luxury private homes.

MIDAS is most frequently used for:

- Furniture and parts of interior fittings
- Decorative walls and ceilings
- Reception areas and bar facilities
- Shopfitting and exhibition constructions
- Yacht interior

MIDAS Metall can be applied on almost all substrate materials and is suitable for interior as well as exterior applications. The metal finishes are created by trained craftsmen to fulfill individual customer requirements.





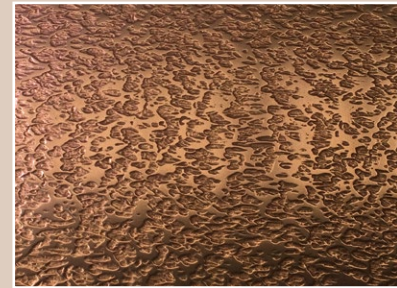
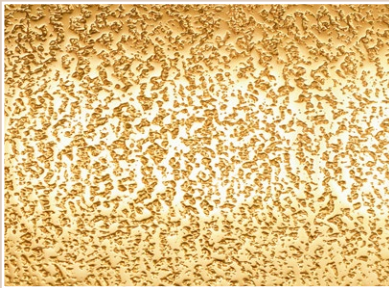


# ARTIFEX SPATULA PRODUCTS

Our Artifex spatula products are used predominantly in the area of decorative wall design and ceilings. The coating can be carried out directly on site and even on huge surfaces without jointing. A free-hand application of the spattling compound enables an individual and

unique surface design. For creative accents, miscellaneous thin- and thick-viscosity spatula products are available to be applied by trowel, roller or paint-brush. The Artifex products include the acrylic-based Artifex 2.1 and 2.2 for interior applications as well

as Artifex 1.2 and 6.0 for exterior, wet or frequently used areas. The results are finishes with more than 90% real metal leaving an individual signature and giving a sense of uniqueness.

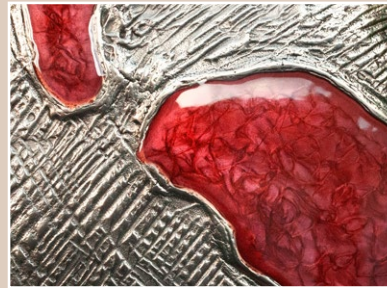


## MIDAS Metall *Art*

The word “Artifex” derives from Latin language and signifies an artist and true master of his handcraft – someone who knows how to use his imagination and creativity for establishing something unique.

MIDAS Metall® Artifex lives up to its name being in the hands of creative people. Through collaboration with several international artists, ingenious designs come into existence. They exceed the classical application tech-

niques. Extraordinary effects are generated by the combination of different metals or by embedding into other high-value materials. For example nobles wood veneers or pearls.

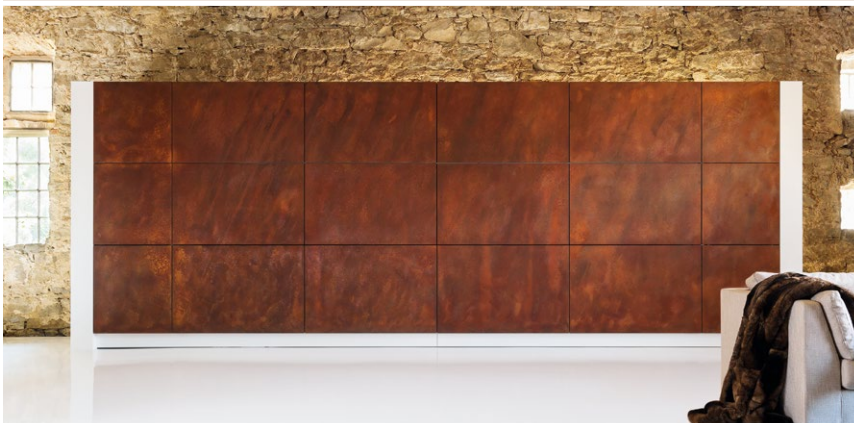












## WARENDORFER “HIDDEN KITCHEN”

Surface coating of kitchen fronts with natural rust design. Application by lacquering with MIDAS Metall Artifex 3.0 Iron.



# APPLICATION TECHNIQUE

The creation of MIDAS Metall is beyond physics. It is processed either like a lacquer or spackle depending on the certain product and its viscosity. Even and complex surfaces can be coated without jointing. Depending on the application type, smooth or

structured metal coatings with various thicknesses between 0.1 and 2,0 mm can be generated. When dry, the coatings are finely sanded, followed by brushing for a matt finish or polishing for a glossy finish. Alternatively, special oxidation agents can be used

to create vintage finishes with patina. The surface can be sealed or left in its natural state on request. The processing is carried out in a work shop or directly on site.

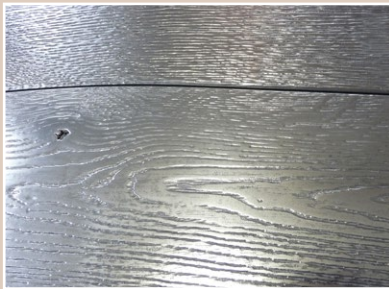


# SURFACE DESIGN

The surface can be created individually by using different application techniques as well as the finishing processes. Besides the classic polishing of the metal skin there are also special techniques for example browning.

Typical surfaces are:

- smooth or structured



- matt brush-finish or polished glossy
- sealed or with natural finish
- browned or rusted
- MIDAS as intarsia

Special effects can be obtained by the coating of materials with already existing texture through application by lacquering.

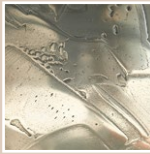


MIDAS keeps the natural form in an elegant metal look. Besides the standard metals there are luxurious alloys, such as Platinum, White-Gold, Champagne or Gold-Bronze. Individual alloys are possible to manufacture upon request.





Brass  
trowel application



White Bronze  
trowel application



Platin  
trowel application



Bronze  
trowel application



Bronze antik rustic  
trowel application



Bronze antique  
trowel application



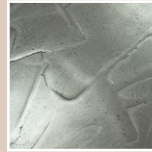
Aluminum  
trowel application



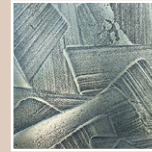
Steel B50  
trowel application



Tin  
trowel application



Steel B1  
trowel application



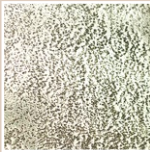
Jura  
trowel application



Steel D1  
sprayed



Gold  
trowel application



White Gold  
trowel application



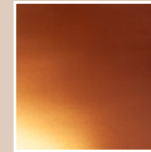
IMM  
trowel application



Iron  
trowel application



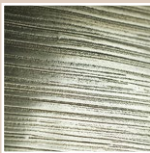
Jura  
sprayed



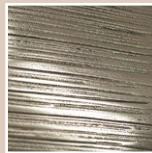
Copper  
sprayed



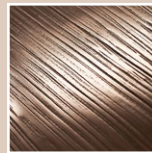
Gold light  
trowel application



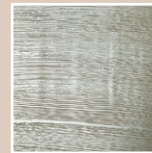
Champagne  
trowel application



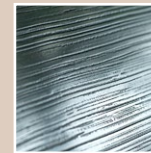
Bronze light  
trowel application



Gold Bronze  
trowel application



Steel  
trowel application



Zinc  
trowel application







# MIDAS SERVICES

## **For architects and designers:**

- Consulting services for materials and applications
- Tailor-made solutions and services
- Project monitoring and support throughout all stages
- Recommendation of qualified processing partners and distributors nationwide and internationally

## **For processing partners:**

Considerable product portfolio for all application areas and requirements

- Accessories, like substrate preparation, processing techniques or surface protection
- Trainings and knowledge transfer
- Immediate availability and supply
- Project support by technical staff

## **Showrooms in Hamburg and in the MIDAS headquarters in Worbis.**

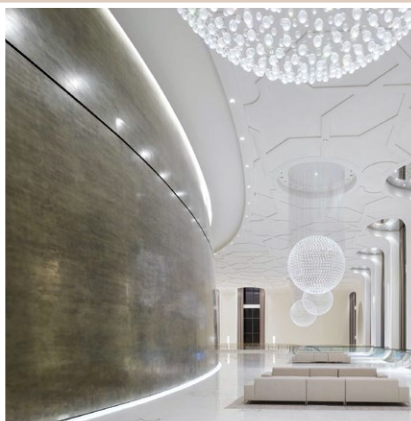
High-end experience and first-class services are top priorities for MIDAS.

# COME AND SEE FOR YOURSELVES!



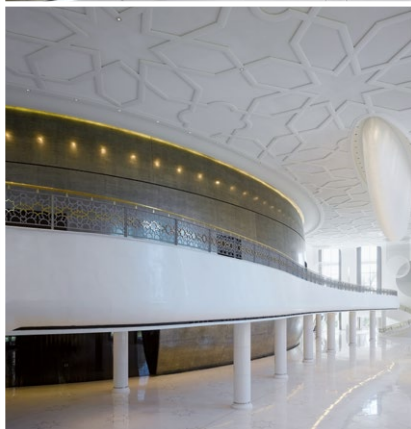
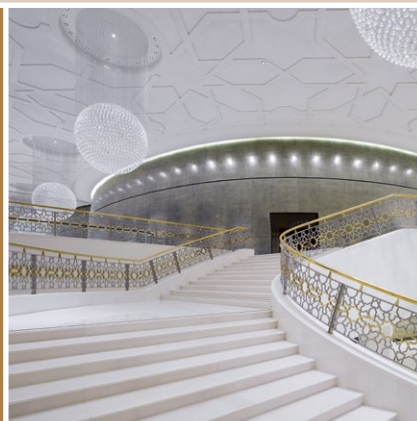
# OVERVIEW OF MATERIALS

<b>Metallic surface</b>	contains 90-95% genuine metal with its natural characteristics.
<b>Base material</b>	very good adhesion on almost all substrates after appropriate preparation (smooth and non-absorbent).
<b>Application possibilities</b>	coating without joints independent of size and shape of the object. For indoors and outdoors.
<b>Processing</b>	at room temperature, flexible application by lacquering or Artifex spatula products.
<b>Usage location</b>	in workshop or directly on site.
<b>Environmental compatibility</b>	solvent-free products on dispersion-basis for all application types. The main product component is real metal.
<b>Consistency (depend on the product)</b>	<ul style="list-style-type: none"><li>· frost and weather-resistant</li><li>· partially chemical consistent</li><li>· partially UV resistant</li><li>· scratch resistance complies with metal hardness</li></ul>
<b>Refurbishment</b>	by grinding and repolishing possible.



## CONVENTION CENTER TASHKENT (UZBEKISTAN)

Surface coating of huge wall areas  
with MIDAS Zinc Alloy. Application  
by lacquering on site. Total surface  
about 2000 m<sup>2</sup>.





Attitude  
is  
everything

© 2011, Inc. All Rights Reserved





material  
award



product  
design award

### Picture Index:

Page	Application	Project	Metal Finish
5	Kitchen furniture & fireplace	Country House Mecklenburg	polished (trowel application)
6	Wall with Bar counter	IZB Martinsried Faculty Club	Gold polished (trowel application)
9	Ball fountains	Schoolyard Berlin Marzahn	Bronze & Copper polished (trowel application)
10	Doors Parish	church Coburg	Zinc polished (trowel application)
11	Surgery furniture	Medical office Dr. Pishgah	Copper cracked polished (sprayed)
12	Design Kitchen	Warendorfer Hidden Kitchen	Iron natural rust design (sprayed)
16	Celling surfaces	Bucherer Jewelry Store Munich	Zinc alloy polished (sprayed)
17	Wallpanels & fronts	Hof 18 Restaurant Cologne	Brass patinated (sprayed)
19	Reception counter	Ellington Hotel Berlin	Brass polished (sprayed)
21	large-scale walls	Convention Center Tashkent (Uzbekistan)	Zinc alloy polished (sprayed)
22	Reception counter	Renaissance New York Midtown Hotel	Gold polished (trowel application)

Another selection of our references can be found on [www.midasmetail.de](http://www.midasmetail.de).

## **MIDAS Surfaces GmbH**

Nordhäuser Str. 40 · 37339 Leinefelde-Worbis · Germany

Phone: +49 36074 6308-12 · Fax: +49 36074 6308-22

[www.midasmetail.de](http://www.midasmetail.de)

[midas@midassurfaces.de](mailto:midas@midassurfaces.de)

## **MIDAS Metall Showrooms**

HEADQUARTERS WORBIS

Nordhäuser Str. 40 · 37339 Leinefelde-Worbis · Germany

SPEICHERWERKSTATT

St. Annenufer 5 · 20457 Hamburg (Speicherstadt) · Germany

